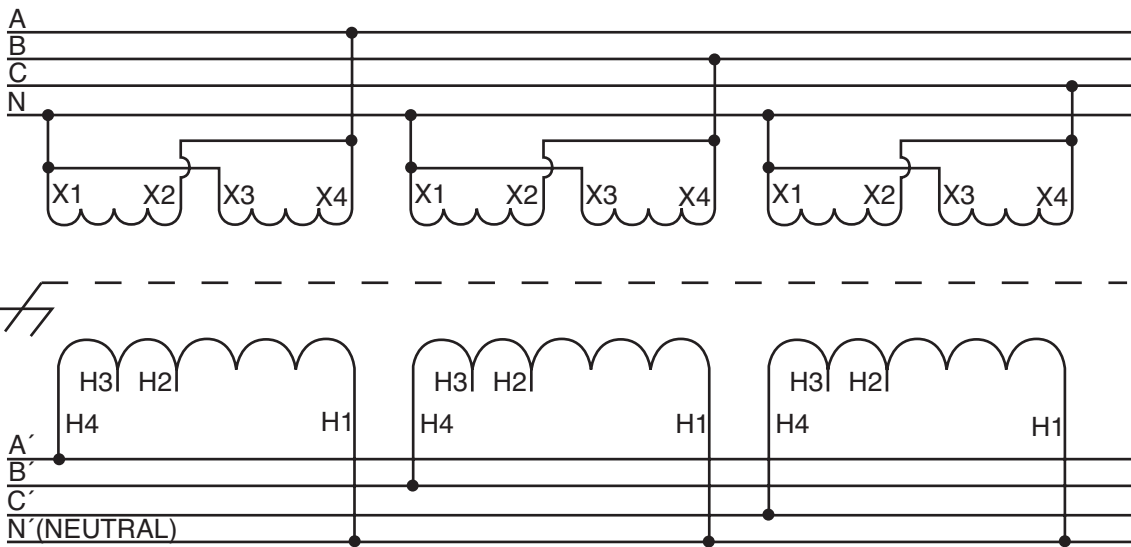


INPUT 208Y/120 VOLTS 3Ø 60 HZ 4 WIRE WYE



OUTPUT 480Y/277 VOLTS 3Ø 4 WIRE WYE

CATALOG NO.	KVA	QTY.
T-2-53170-1S	3	3
T-2-53171-1S	4.5	3
T-2-53172-1S	6	3
T-2-53173-1S	9	3
T-2-53174-1S	15	3
T-2-53675-1S	22.5	3
T-2-53676-1S	30	3
T-2-53677-1S	45	3
T-2-53678-1S	75	3

CAUTION: FOURTH WIRE (NEUTRAL) OF SUPPLY VOLTAGE MUST BE CONNECTED TO THE NEUTRAL OF THE BANK OF TRANSFORMERS

INPUT AND OUTPUT CAN BE REVERSE CONNECTED



**Acme Electric Corporation**

Power Distribution Products Division  
AN ACTUANT COMPANY

4815 West Fifth Street  
Lumberton, NC 28358  
910-738-1121 Inside NC  
800-334-5214 Outside NC  
910-739-0024 Fax  
[www.acmepowerdist.com](http://www.acmepowerdist.com)