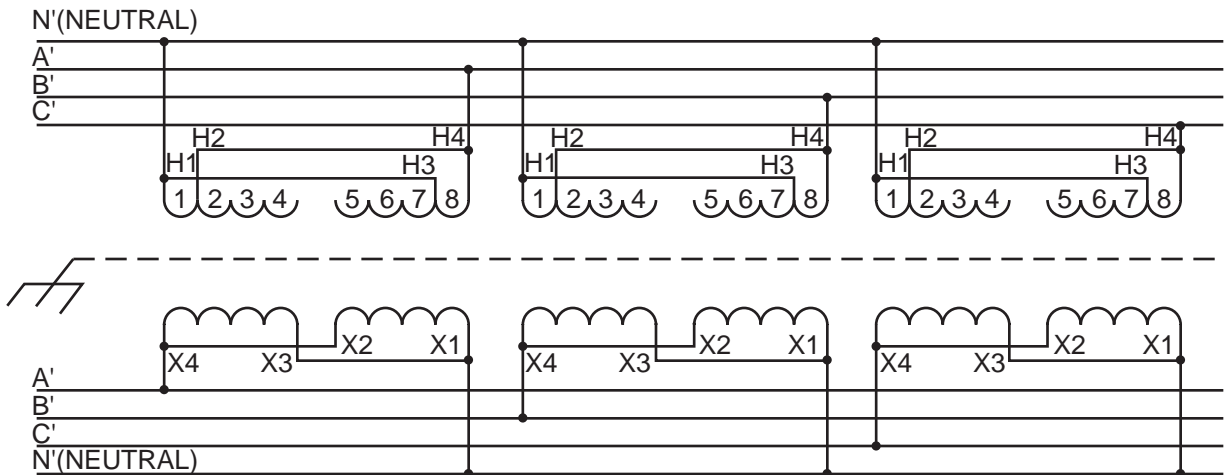


INPUT 375Y/216 VOLTS 3Ø 60 HZ 4 WIRE



OUTPUT 208Y/120 VOLTS 3Ø 60 HZ 4 WIRE

CATALOG NO.	1Ø KVA	3Ø KVA	QTY.
T-2-53019-3S	37.5	112.5	3
T-2-53020-3S	50	150	3
T-2-53021-3S	75	225	3
T-2A-53022-3S	100	300	3
T-1-53023-3S	167	500	3
T-2-53024-3S	250	750	3

CAUTION: NEUTRAL MUST BE AVAILABLE AND CONNECTED TO THE TRANSFORMER.  
CAN BE REVERSE CONNECTED.



**Acme Electric Corporation**

Power Distribution Products Division

4815 West Fifth Street  
Lumberton, NC 28358  
910-738-1121 Inside NC  
800-334-5214 Outside NC  
910-739-0024 Fax

[www.acmepowerdist.com](http://www.acmepowerdist.com)